



# DIAMOND TILE DRILLS

## VAPODRY



### VAPODRY DRY/WET DRILL IN THE HARDEST TILES

**DESCRIPTION :** ULTRA diamond drill with a brazed bond matrix giving the ability to drill the hardest porcelain tiles practically DRY! Drill quickly and easily with minimal coolant and incredible life, auto slug ejection and 3 flattened shank.

**USE ME FOR :** Porcelain (grade 5) / Ceramic / Quarry tiles / Terracotta Glazed tiles / Terrazzo / Marble / Agglomerates / Cement / Glass / Granite

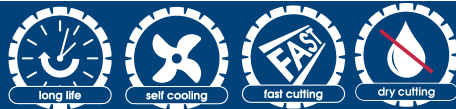
SUPERIOR GRADE DIAMOND & BRAZED BOND

PATENTED THIN KERF DESIGN - 30MM CUT DEPTH

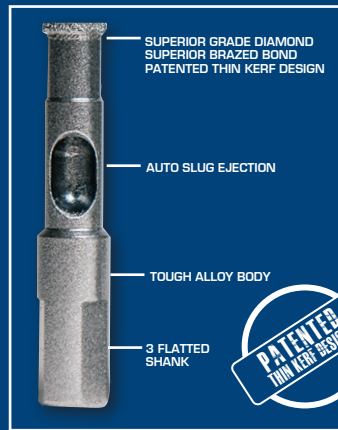
TOUGH ALLOY BODY FOR STRENGTH

MARKET LEADING CUT SPEEDS & LIFE (WITH WATER)

AUTO SLUG EJECTION / 3 FLATTED SHANK FOR GRIP



PORCELAIN TILE & OTHER HARD MATERIALS	ULTRA VAPODRY
DIMENSIONS	DU-CTD-VAPODRY
YELLOW PLUG (5MM)	5DU-CTD-VAPODRY
RED PLUG (6MM)	6DU-CTD-VAPODRY
BROWN PLUG (7MM)	7DU-CTD-VAPODRY
FISCHER NYLON PLUG (8MM)	8DU-CTD-VAPODRY
BLUE PLUG (8-10MM) / BORE PIPE	10DU-CTD-VAPODRY
COACH SCREW (12MM)	12DU-CTD-VAPODRY
15MM COPPER PIPE	16DU-CTD-VAPODRY
18MM COPPER PIPE	20DU-CTD-VAPODRY
22MM COPPER PIPE	25DU-CTD-VAPODRY
28MM COPPER PIPE	30DU-CTD-VAPODRY
1-1/2 WASTE PIPE	35DU-CTD-VAPODRY
PLUG SIZE KIT (5,6,7,8 & 10MM)	CTD-KIT-5-10



### DRILL NEAR DRY IN THE HARDEST OF TILES!

MINIMAL COOLANT ALLOWS DRY DRILLING WITH EXCEPTIONAL WET DRILLING LIFE

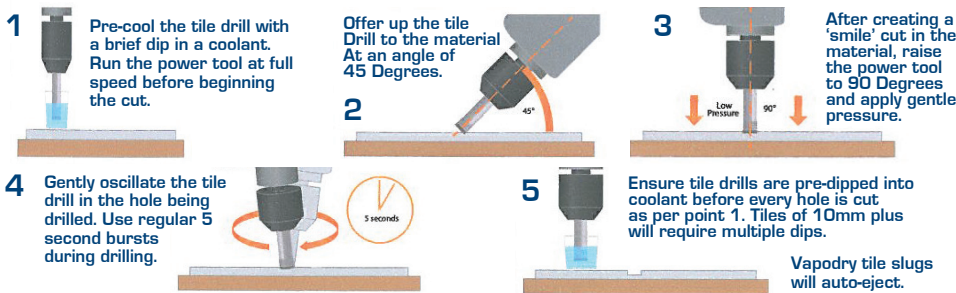
#### WET DRILLING

> Drill with coolant to achieve market leading life / numbers of holes and speed of cut

#### NEAR DRY DRILLING

- > Ideal for when you need to avoid tile or grout discolouration
- > First spin the drill bit in some coolant briefly
- > This is enough for water vapour to form on the barrel & enable penetration without the need for constant coolant flow
- > The life / number of holes produced will reduce without a constant flow of water

### BEST PRACTICE GUIDELINES



THE TOP-LINE FROM DURO, WHERE MAXIMUM PERFORMANCE IS THE ONLY CONSIDERATION DURING THE PRODUCT DESIGN PROCESS. THE VERY BEST QUALITY RAW MATERIALS ARE UTILISED TO ENSURE THE HIGHEST POSSIBLE OUTPUT.

