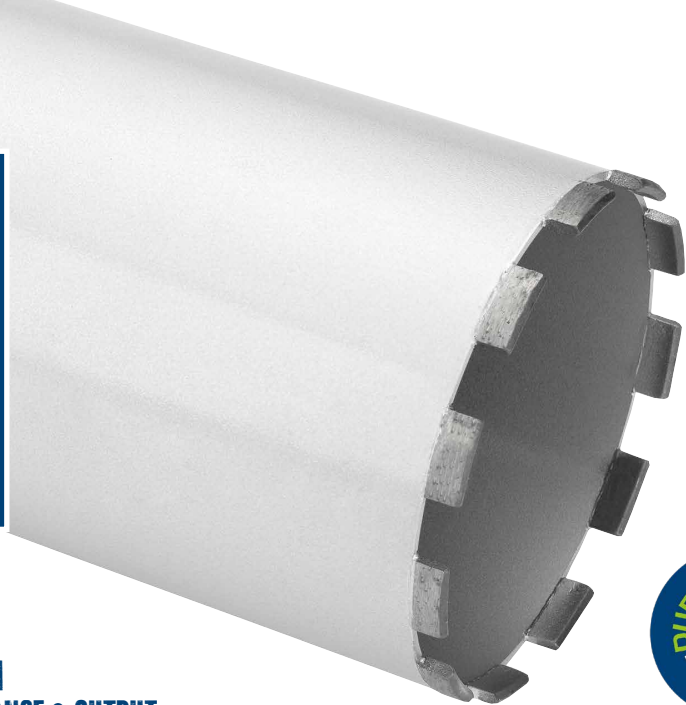




**DUST FREE DRY  
DIAMOND CORE DRILLING**  
**DUDCC**  
HEAVY DUTY MATERIALS  
REINFORCED CONCRETE & BRICK  
SEGMENTED



### CORE DRILL APPLICATIONS

HARD / DENSE MATERIAL	
	CLASS A ENGINEERING BRICKS
	FLINT AGGREGATE COMMON
	CLASS B ENGINEERING BRICKS
	LIGHTLY REINFORCED CONCRETE
	HEAVILY REINFORCED CONCRETE CONCRETE
	HARD YORK STONE
	LONDON BRICK
	GENERAL HOUSE BRICK
	HANDMADE BRICKS
	FACING BRICKS
	LIGHTWEIGHT CONCRETE BLOCK
	BREEZE BLOCK
	ABRASIVE SAND / GRIT STONE

HIGHLY SUITED   
  SUITABLE WITH RESERVATIONS   
  NOT SUITABLE

### SIZES

DUDCC 1/2" BSP 300mm LONG	DUDCC 1 1/4 UNC 300mm LONG
32DUDCC	52DUDCC
42DUDCC	65DUDCC
	70DUDCC
	77DUDCC
	82DUDCC
	92DUDCC
	102DUDCC
	107DUDCC
	112DUDCC
	117DUDCC
	127DUDCC
	132DUDCC
	142DUDCC
	152DUDCC
	162DUDCC
	172DUDCC
	182DUDCC
	202DUDCC

ALL SIZES OF DUDCC FIT DIRECTLY TO THE AGP DD62 - THE IDEAL DRILL MOTOR

EXTEND YOUR REACH WITH EXT2-DRY-150 (150MM) OR EXT2-DRY-300 (300MM) ADAPTORS UP TO 52MM DIA

EXTEND WITH EXT1-DRY-250MM ADAPTOR ABOVE 52MM DIA

### MAXIMUM PERFORMANCE & OUTPUT



### THE DUST FREE ALTERNATIVE TO WET CORE DRILLING

DUDCC is ideal for rig based drilling of heavy duty materials including reinforced concrete.

When used with the AGP DD62 Drill Motor and DS25M Vacuum a dust free environment is created, no slurry, dust or mess.

These 300mm laser welded cores penetrate concrete at similar rates to wet drilling, just without the mess.

#### USE ME FOR

- All types of brick including class A & B engineering
- All types of concrete including light & heavily reinforced
- Stone such as Hard York
- Occasional use in lightweight block and abrasive stone
- For rig mounted use

#### FEATURES

- Segments > 10mm Roof top design
- Barrel > 300 mm long - solid
- Bonding > Laser welded
- Fitting > 1/2" BSP (M) - 32 & 42 mm
- Fitting > 1 1/4 UNC (F) - 52 mm & above
- Perform > Maximum performance & output



ORDER LINE: 01909 552470

EMAIL: INFO@DURO-YOKOTA.CO.UK

WWW.DURO-DIAMONDS.COM



## CORE DRILLING OF HEAVY DUTY APPLICATIONS WHERE DUST EXTRACTION IS REQUIRED

### REINFORCED CONCRETE

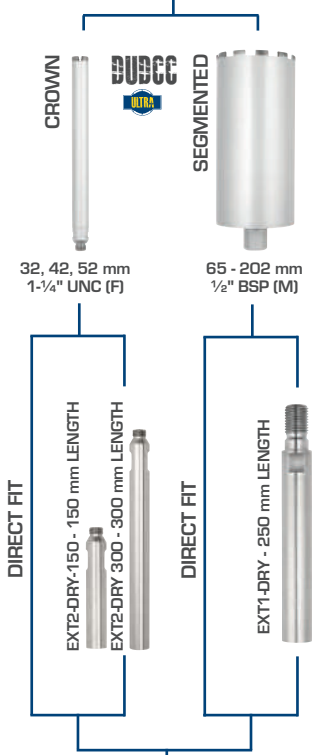
All types of brick including class A & B engineering - All types of concrete including light & heavily reinforced Stone such as Hard York - Occasional use in lightweight block and abrasive stone

CORE DRILL OPTIONS

EXTENSION OPTIONS

POWER TOOL

DRILL RIGS



Standard materials  
262 mm Max  
Reinforced concrete  
162 mm Max



200 mm  
Max Core  
Diameter

## THE DUST FREE DRILLING PROCESS

- A simple but incredibly efficient process enables core drilling in any environment - indoor or outdoor with minimal dust creation
- Use a suitable drill motor with a through spindle dust extraction system such as the DD62 (page 173)
- The DD62 should be attached to a suitable 60mm collar mounted drill rig such as the B14 (page 179)
- Attach the DURO DUDCC core either to the DD62 either directly or via the dry drilling hollow extensions
- Connect the DS25M vacuum to the dust extraction port
- During the drilling operation, the high-performance DS25M vacuum system efficiently extracts dust from the drilling face
- Dust is extracted through the solid barrel core, then passes through the hollow extension (if fitted), continues through the hollow spindle of the drill motor, and is finally drawn into the vacuum system via the hose
- 100% effective
- To extend the reach of the DUDCC core drill use -
  - EXT2DRY-150 or EXT2DRY-300 extension bars for sizes 32, 42 & 52 mm
  - EXT1DRY For sizes 65 to 202 mm





**PLUS**

**ACCESSORIES**

## ACCESSORIES

USE ME FOR

Adapting to a variety of machine types  
Extending the reach of the core drills

Options for DURO wet & dust free drilling

- > Maximum strength & durability
- > Premium grade steel

FEATURES

SIZE RANGE / CODE

### STANDARD WET CORE DRILLING

1/2" BSP (M) TO 1/4" UNC (M) Adaptor	AD1
1/2" BSP (F) TO 1/4" UNC (F) Adaptor	AD2
1/2" BSP (M) TO 1/2" BSP (M) Adaptor	AD3
1/2" BSP (F) TO 1/2" BSP (F) Adaptor	AD4
SDS Plus TO 1/2" BSP (F) Adaptor	DP-SDS-1/2"-F
300 mm - 1/4" UNC (F) to 1/4" UNC (M) Extension	EXT1
300 mm - 1/2" BSP (F) to 1/2" BSP (M) Extension	EXT2
Hilti DD100/120/130/150-BI+ to 1/4" UNC (M) & 1/2" BSP (F)	DD130*
Hilti DD160 to 1/4" UNC (M) and 1/2" BSP (F)	DD160
Hilti DD200 to 1/4" UNC (M) and 1/2" BSP (F)	DD200
Hilti DD250 to 1/4" UNC (M) and 1/2" BSP (F)	DD250

### DUST FREE CORE DRILLING

300mm Hollow Extension - 1/4" UNC (F) to 1/4" (M)	EXT1-DRY
150mm Hollow Extension - 1/2" BSP (F) to 1/2" BSP (M)	EXT2-DRY-150
300mm Hollow Extension - 1/2" BSP (F) to 1/2" BSP (M)	EXT2-DRY-300

\*Suitable for Hilti DD100, DD120, DD130, DD150 & DD150-BI+

## ADAPTORS & EXTENSIONS

### STANDARD WET CORE DRILLING



### DUST FREE CORE DRILLING





## CORE DRILL APPLICATIONS

MATERIAL TYPE	ULTRA PLUS		ULTRA
	DWVC	DPVC	DUDCC
<b>HARD/DENSE MATERIALS</b>	WET CUTTING		DUST FREE
Class A Engineering Bricks			
Flint Aggregate Common			
Class B Engineering Bricks			
Lightly Reinforced Concrete			
Heavily Reinforced Concrete			
Concrete			
Hard York Stone			
London Brick			
General House Brick			
Handmade Bricks			
Facing Bricks			
Lightweight Concrete Block			
Breeze Block			
Abrasive Sand / Grit Stone			
<b>SOFT/ABRASIVE MATERIALS</b>	Highly Suited	Suitable With Reservations	Not Suitable Do Not Use



## CORE DRILL SPEED RECOMMENDATIONS

### WET DIAMOND / DUST FREE

8-29 mm	3,000 RPM
30-45 mm	1,500 RPM
46-65 mm	1,200 RPM
66-89 mm	900 RPM
90-125 mm	600 RPM
126-200 mm	450 RPM
201-400 mm	300 RPM
400-500 mm	200 RPM