



DRY DIAMOND CORE DRILLS

DPDC

LIGHT / MEDIUM DUTY



APPLICATIONS - BRICK / BLOCK / CONCRETE

HARD / DENSE MATERIAL	CLASS A ENGINEERING BRICKS	■
	FLINT AGGREGATE COMMON	■
	CLASS B ENGINEERING BRICKS	■
	LIGHTLY REINFORCED CONCRETE	■
	HEAVILY REINFORCED CONCRETE	■
	CONCRETE	■
	HARD YORK STONE	■
	LONDON BRICK	■
	GENERAL HOUSE BRICK	■
	HANDMADE BRICKS	■
SOFT / ABRASIVE MATERIAL	FACING BRICKS	■
	LIGHTWEIGHT CONCRETE BLOCK	■
	BREEZE BLOCK	■
	ABRASIVE SAND / GRITSTONE	■
	HIGHLY SUITED	■
	SUITABLE WITH RESERVATIONS	■
NOT SUITABLE	■	

EXCELLENT PERFORMANCE & OUTPUT



SIZES

DIMENSIONS	DPDC
22 x 300 x (HEX)	22DPDC
28 x 300 x (HEX)	28DPDC
32 x 150 x R½	32DPDC
38 x 150 x R½	38DPDC
42 x 150 x R½	42DPDC
48 x 150 x R½	48DPDC
52 x 150 x R½	52DPDC
65 x 150 x R½	65DPDC
78 x 150 x R½	78DPDC
92 x 150 x R½	92DPDC
102 x 150 x R½	102DPDC
107 x 150 x R½	107DPDC
117 x 150 x R½	117DPDC
127 x 150 x R½	127DPDC
152 x 150 x R½	152DPDC
158 x 150 x R½	158DPDC
162 x 150 x R½	162DPDC
175 x 150 x R½	175DPDC

USE ME FOR

- Hard York stone
- All brick types
- Lightweight concrete block / Breeze block
- Concrete
- Lightly reinforced concrete

FEATURES

- Segments > 10mm
- Segments > Turbo roof top design
- Bonding > Laser welded
- Barrel > Spiral fluted
- Barrel > Dust removal slots
- Perform > Excellent performance & output

Also available:
DPDC-SOLID
- solid barrel
to enable dust
extraction

DRY DIAMOND CORE DRILL SPEED RECOMMENDATIONS

22 mm	3,000 RPM	92 mm	800 RPM
28 mm	2,380 RPM	102 mm	750 RPM
32 mm	1,900 RPM	107 mm	625 RPM
38 mm	1,760 RPM	117 mm	570 RPM
42 mm	1,600 RPM	127 mm	520 RPM
48 mm	1,400 RPM	152 mm	440 RPM
52 mm	1,280 RPM	158 mm	380 RPM
65 mm	1,030 RPM	162 mm	350 RPM
78 mm	860 RPM	175 mm	320 RPM

- Speed may be adjusted to suit site conditions
- For very abrasive materials an increase in drill speed (rpm) will prolong life
- For harder materials, decrease the drill speed to prevent overheating
- Machine and material are the controlling factors to the life and speed of the core
- Correct machine speed & best practice determines overall performance

DPDC CORE KIT



- DPDC-KITSS**
- 5 piece kit in plastic carry case
 - Core sizes included - 42, 52, 65, 117 & 127 mm
 - Adaptors - SDS Plus & Hex
 - Extension & guide rod
 - 350 mm pilot drill & drift key

ALTERNATIVE PRODUCTS

FULL LIST OF ACCESSORIES INCLUDING PILOT DRILLS, ADAPTORS, GUIDE RODS, DRIFT KEYS & EXTENSIONS AVAILABLE



DPDC-SOLID - DUST FREE DRILLING

DDC-RAPIDE - SUPER FAST VACUUM BRAZED

ACCESSORIES & PROCESS DIAGRAMS

ORDER LINE: 01909 552470

EMAIL: INFO@DURO-YOKOTA.CO.UK

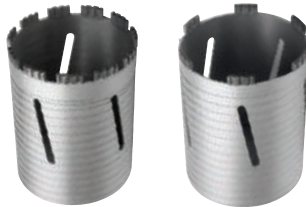
WWW.DURO-DIAMONDS.COM



DRY CORE DRILLING OF LIGHT DUTY APPLICATIONS - HAND HELD INTERNAL AND EXTERNAL- NO OPTION OR REQUIREMENTS FOR DUST EXTRACTION

BRICK / BLOCK / CONCRETE

All brick & block types
Concrete
Lightly reinforced concrete



ULTRA DUSBC
38 - 152 mm

PLUS DPBC
32 - 175 mm

BRICK / BLOCK

All light to medium brick
and block types



STANDARD DDC
38 - 202 mm

BASE DSBC
38 - 162 mm

BRICK / BLOCK / CONCRETE

All brick & block types
Concrete
Lightly reinforced concrete



STANDARD DDC-RAPIDE
38 - 175 mm

CORE DRILL OPTIONS

EXTENSION OPTIONS

ADAPTORS

POWER TOOL / DRILL MOTOR

DIRECT FIT



DP-EXT3
300MM EXTENSION

EXT3-M
350MM EXTENSION

MUST HAVES FOR THE DRILLING PROCESS

- PILOT DRILL** To Drill Guide Hole
- GUIDE ROD** To Guide Core Into Cut
- DRIFT KEY** To Remove Guide Rod



HEAVY DUTY DRILL MOTOR

Standard materials - 202 mm Max diameter (hand held or rig mounted)
Reinforced concrete- 162 mm Max diameter (rig mounted) / 82 mm Max (hand Held)

HEAVY DUTY DRILL MOTOR

Standard materials - 262 mm Max diameter (hand held or rig mounted)
Reinforced concrete- 162 mm Max diameter (rig mounted) / 82 mm Max (hand Held)

LIGHT DUTY DRILL MOTOR - 182 mm Max diameter in standard brick & block (hand held or rig mounted)



DRY DIAMOND CORE DRILL APPLICATIONS



MATERIAL TYPE

	DUSDC	DPDC	DDC	DSDC	DPDC SOLID	DDC RAPIDE
	DRY CUTTING				DUST FREE	VACUUM
Class A Engineering Bricks						
Flint Aggregate Common						
Class B Engineering Bricks						
Lightly Reinforced Concrete						
Heavily Reinforced Concrete						
Concrete						
Hard York Stone						
London Brick						
General House Brick						
Handmade Bricks						
Facing Bricks						
Lightweight Concrete Block						
Breeze Block						
Abrasive Sand / Grit Stone						

SOFT/ABRASIVE MATERIALS

	Highly Suited		Suitable With Reservations		Not Suitable Do Not Use
--	---------------	--	----------------------------	--	-------------------------

ADDITIONAL DDC-RAPIDE MATERIALS

Tile						
Clay Products						
Roof Tiles						
Wood With Nails						
Wood						
Plastics						

DRY DIAMOND CORE DRILL SPEED RECOMMENDATIONS

22 mm	3,000 RPM
28 mm	2,380 RPM
32 mm	1,900 RPM
38 mm	1,760 RPM
42 mm	1,600 RPM
48 mm	1,400 RPM
52 mm	1,280 RPM
65 mm	1,030 RPM
78 mm	860 RPM
92 mm	800 RPM
102 mm	750 RPM

107 mm	625 RPM
112 mm	600 RPM
117 mm	570 RPM
127 mm	520 RPM
132 mm	490 RPM
142 mm	470 RPM
152 mm	440 RPM
158 mm	380 RPM
162 mm	350 RPM
175 mm	320 RPM
202 mm	300 RPM



PLUS

PILOT DRILLS / ADAPTORS / GUIDE ROD / DRIFT / EXTENSIONS

ACCESSORIES

USE ME FOR

Adapting to a variety of machine types
Extending the reach of the core drills

Options for DURO dust free drilling

- > Maximum strength & durability / Premium grade steel
- > SDS Plus, SDS Max, Hex & Hilti adaptors
- > Extensions Rods / Pilot Drills / Guide Rod / Drift Key
- > Dust free adaptors and extensions

FEATURES

SIZE RANGE / CODE

STANDARD & VACUUM BRAZED DRY CORE DRILLING

A-Taper Pilot - 10 x 225 mm (USE WITH DP-GR)	10x225-ATAPERP
A-Taper Pilot - 13 x 320 mm	DP-MD-A
SDS Plus Masonry Pilot Drill - 13 x 450 mm	13.0x450DP-SPLUS
3 Jaw Adaptor - 1/2" BSP (M)	DP-CA
3 Jaw Adaptor Pack	DP-CAP
SDS Plus Adaptor - 1/2" BSP (M)	DP-SA
SDS Plus Adaptor Pack	DP-SAP
SDS Plus Adaptor - 1/2" BSP (F) (For A Wet Core)	DP-SDS-1/2"F
SDS Max Adaptor - 1/2" BSP (M)	DP-SMAX-A
1/2" BSP (M) to 1/2" BSP (M) Adaptor - A Taper Int	AD3-DRY
Hilti DD100 Adaptor to 1/2" BSP (M)	DD100AM
Hilti DD130 Adaptor to 1/2" BSP (M)	DD130AM
Hilti M27 to 1/2" BSP (M)	DD110-DRY
A-Taper Universal Guide Rod	DP-GR
Drift Key	DP-DK
200 mm EXT - 1/2" BSP (F) to 1/2" BSP (M) - 'A' Taper Int	DP-EXT3
250 mm EXT - 1/2" BSP (F) to 1/2" BSP (M) - 'A' Taper Int	EXT3-M
M18x2.5mm Pitch (F) TO 1/2" BSP (M) - 'A' Taper Int	MK-AD

DUST FREE CORE DRILLING

Hollow Core Adaptor - 1/2" BSP (M) to 1/2" BSP (M)	AD3
150 mm Hollow Extension - 1/2" BSP (F) to 1/2" BSP (M)	EXT2-DRY-150
300 mm Hollow Extension - 1/2" BSP (F) to 1/2" BSP (M)	EXT2-DRY-300

ADAPTORS & EXTENSIONS

STANDARD DRY CORE DRILLING

DUST FREE CORE DRILLING

DP-CA DP-SA DP-SMAX-A MK-AD DD100AM DD130AM DD110-DRY AD3-DRY DP-EXT3

AD3 EXT2-DRY-300



DRIFT KEY



A-TAPER PILOT



GUIDE ROD

